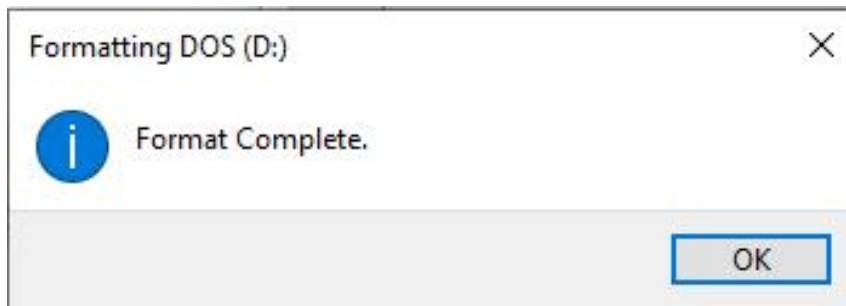
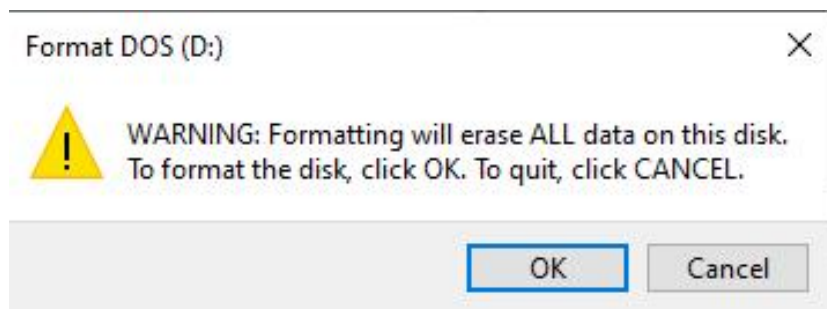
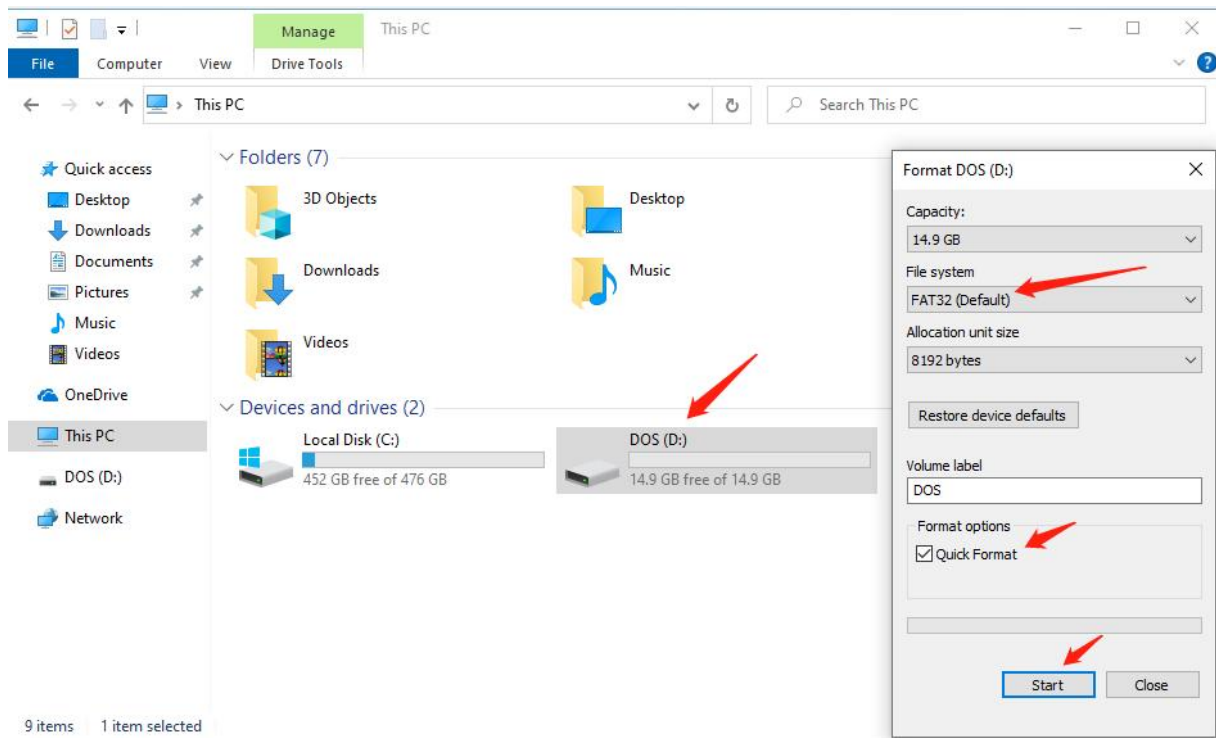
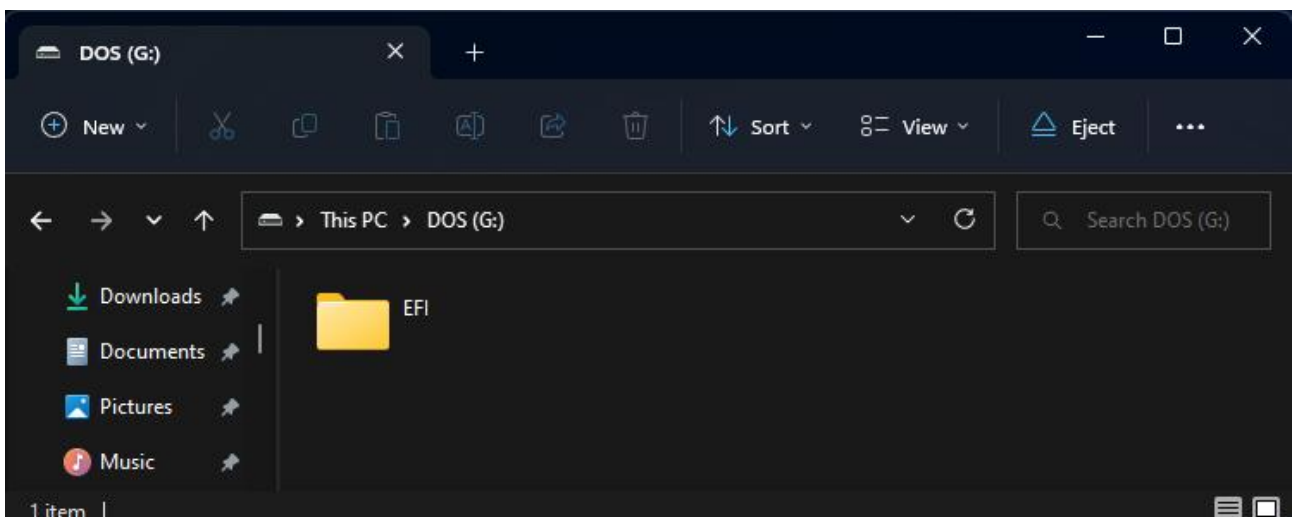


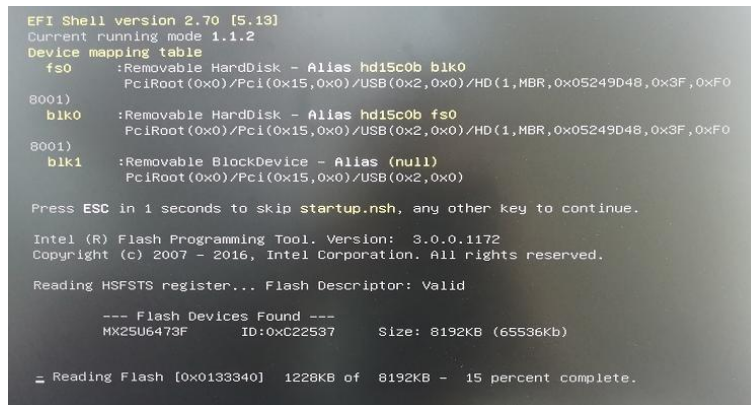
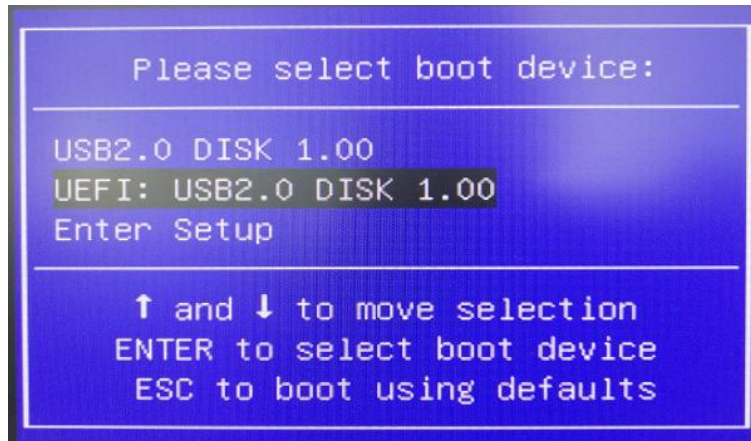
1. Prepare an empty flash drive in FAT32 format



2. Put the EFI folder into the root directory of the USB flash drive. As shown below:



3、 Press F11 and select UEFI Mode USB Flash Drive to start the device. Then the device will automatically write, and power off automatically after the writing is complete;



Note:

- 1、 Before brushing the BIOS, check whether the mainboard model is the same as the BIOS model. If the BIOS model is incorrect, the mainboard does not start.
- 2、 Do not perform any operation or power off during the writing process. Otherwise, the device cannot be turned on.